



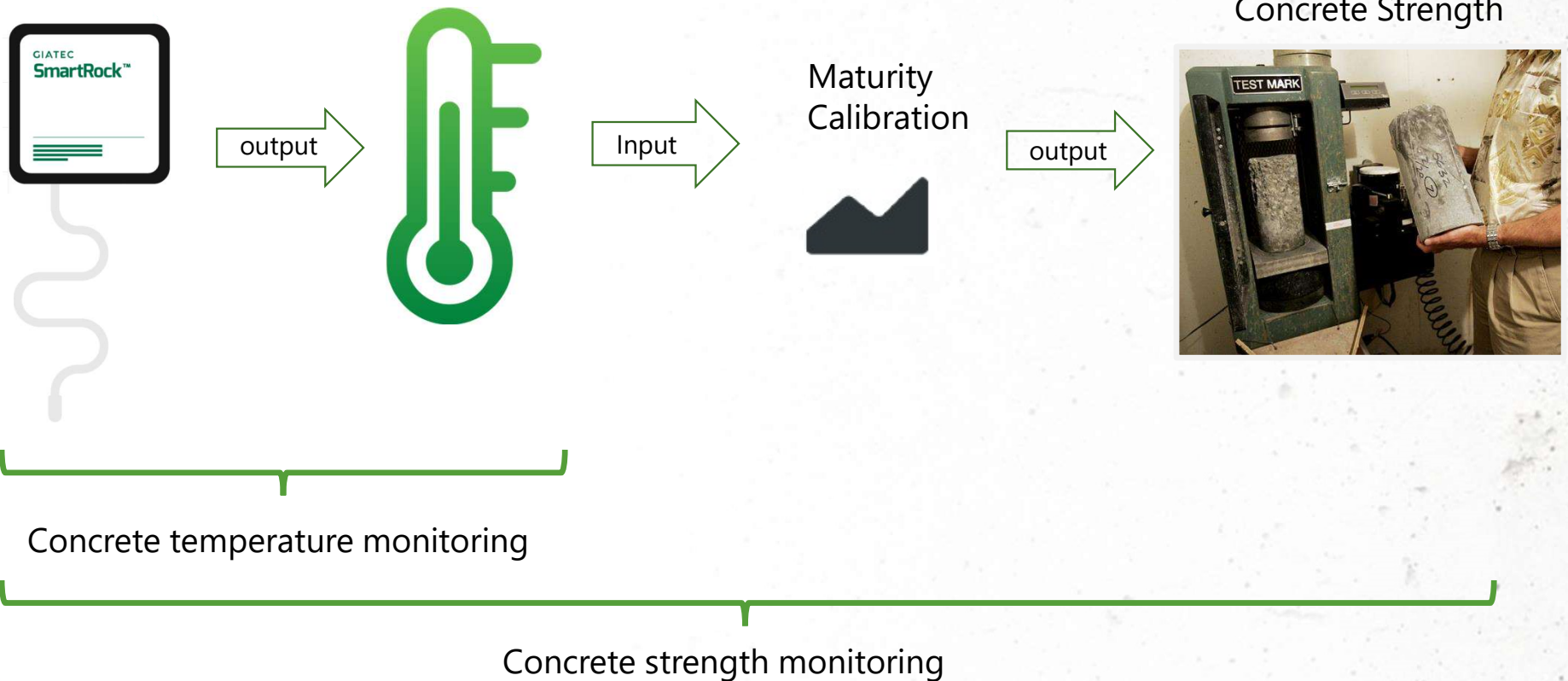
 GIATEC
SmartRockTM
Revolutionizing the
Construction Industry

The image features a green-tinted background of a construction site with workers and rebar. The logo and text are centered in white. The logo icon is a stylized 'G' shape. The text 'GIATEC' is in a sans-serif font, 'SmartRock' is in a bold sans-serif font with a trademark symbol, and the tagline is in a smaller sans-serif font.

Agenda

- Introduction
- Sensor hardware
- Sensor installation
- Smartphone application
- Intro to Giatec 360

SmartRock Concept





Hardware

Play Video ▶

https://www.youtube.com/watch?v=50IagMW4V_Y&feature=youtu.be

SmartRock™ Sensor



Metal Wires: Activate the sensor and secure the sensor on the rebar

Temperature Cable:
NTC



Black Box: Battery, Bluetooth antenna, and memory

Features

 Reading Range	-22 to +176 °F (-30 to +80 °C)
 Accuracy	±1.8 °F (1 °C)
 Measurement Frequency	Every 15 minutes (for 2 months of data)
 Wireless Signal Range	Up to 8 meters* Up to 26 feet*
 Dimensions	38 x 38 x 12 mm (1.5 x 1.5 x 0.5 inches)
 Temperature Cable Length	16 inches (40cm)/ 10 feet (3m)
 Battery Life	Up to 4 months after installation

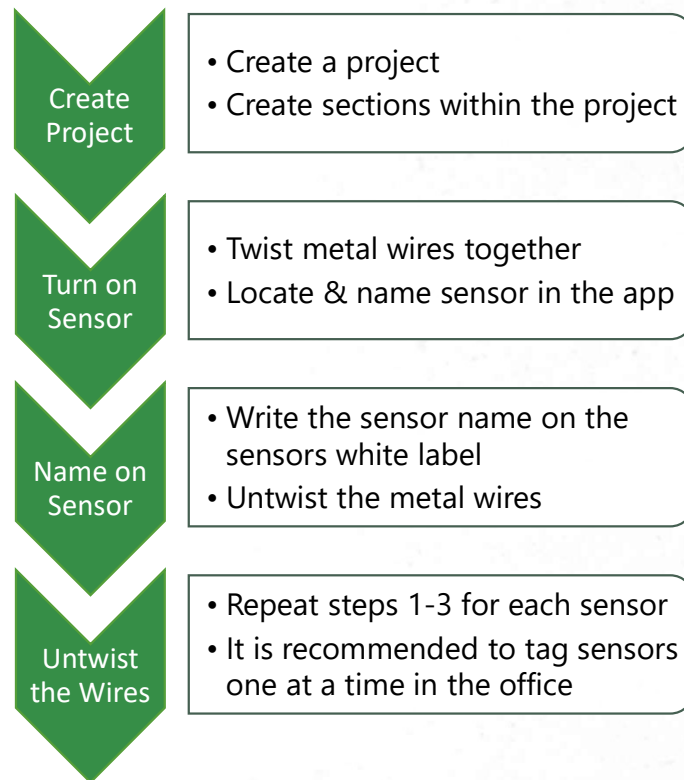
A green-tinted background image of a construction site. It shows a dense network of vertical rebar for a concrete structure. Several construction workers wearing hard hats and safety vests are visible, some standing and others working. The overall scene is busy and industrial.

Installation

Play Video ▶

https://youtu.be/G_9FChOGyII

Tagging the sensor



Slide 8

IM2 Please check if you agree with this new layout
Tagging / Installation
Icaro Mariani, 2020-07-06

Installation

Install on top of rebar intersection with white label facing up

Mind the maximum cover depth of 2 in (5cm)

Tightly twist the two metal wires together

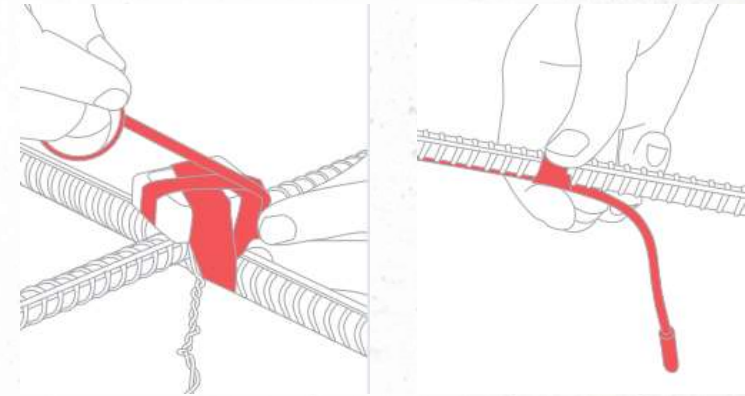
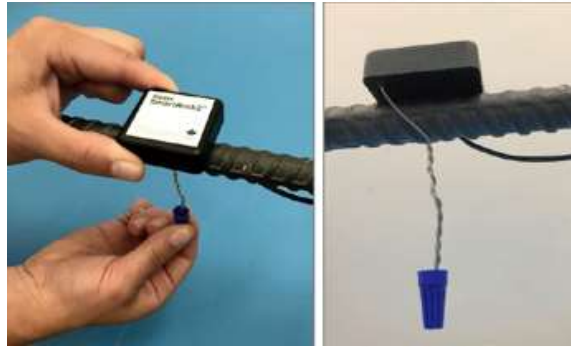
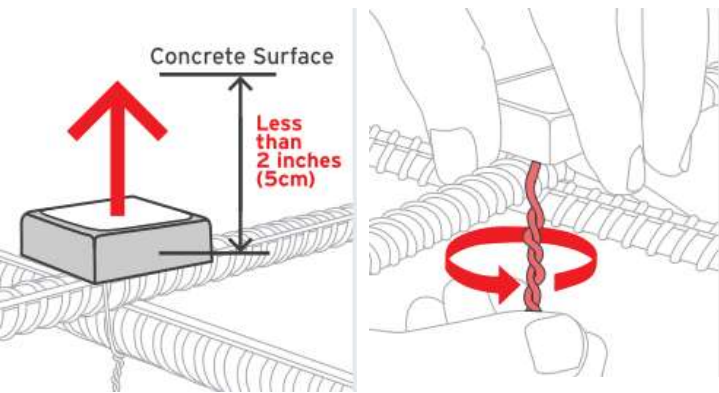
Install the blue connectors at the end of the metal leads

*kit ensures full electrical continuity on the metal leads and it is a fundamental component of the installation

Secure the sensor using tape or zip ties to prevent rotation

*Avoid using metal rebar ties

Run the temperature cable along the bottom of the rebar

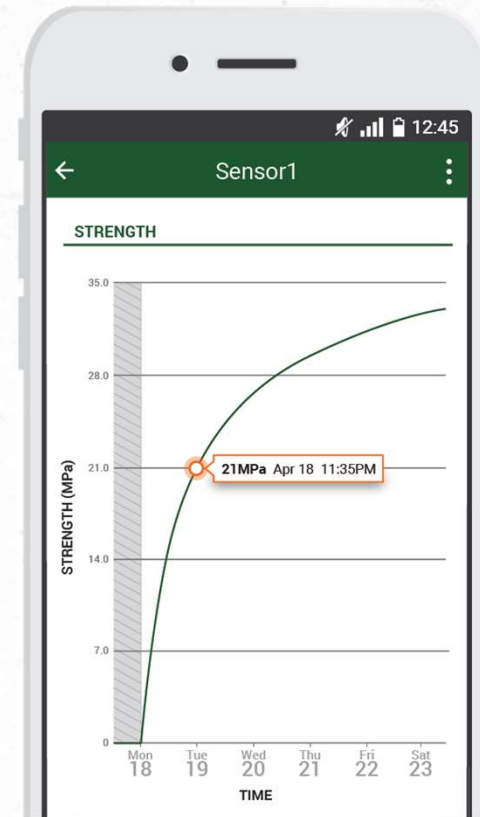
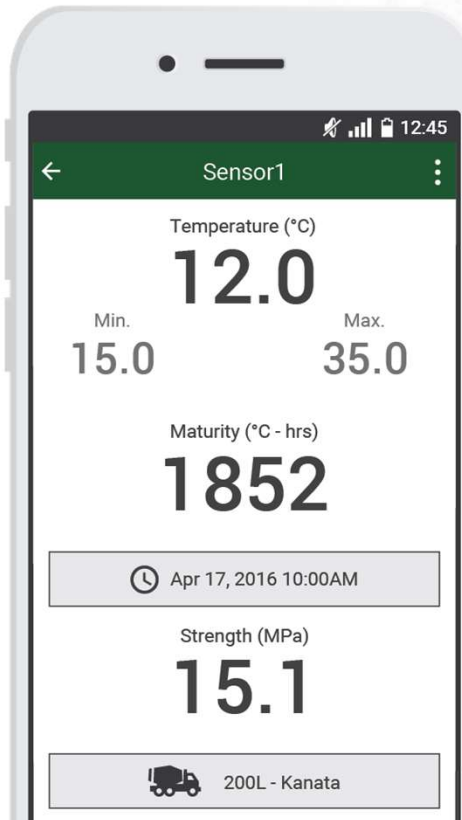
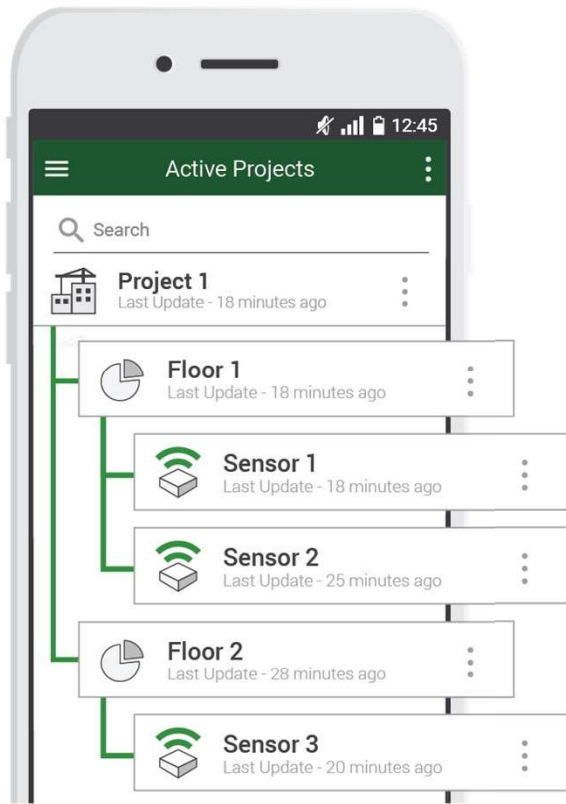


Phone Application

Play Video ▶

<https://youtu.be/i9Z8bXTVQgc>

General organization



Side Menu

View archived (inactive) projects

Create Mix

Create Thresholds

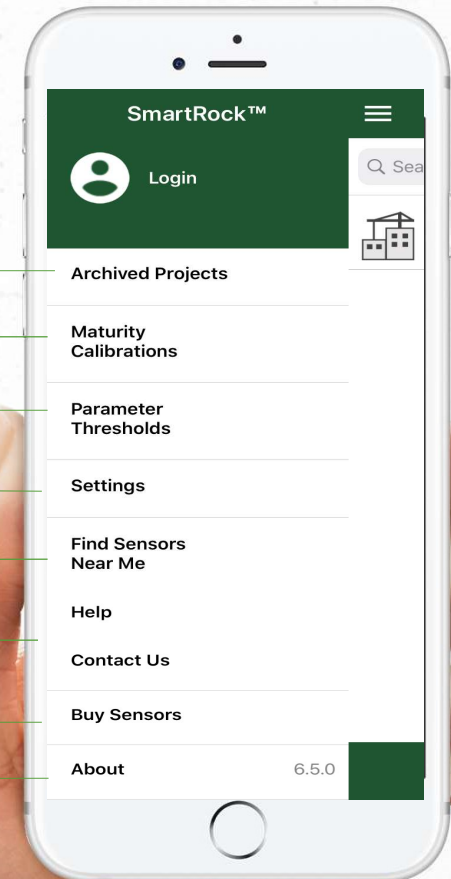
Change Units (Metric/ Imperial)

Faster connection to tagged sensors

Need help

Need new sensors

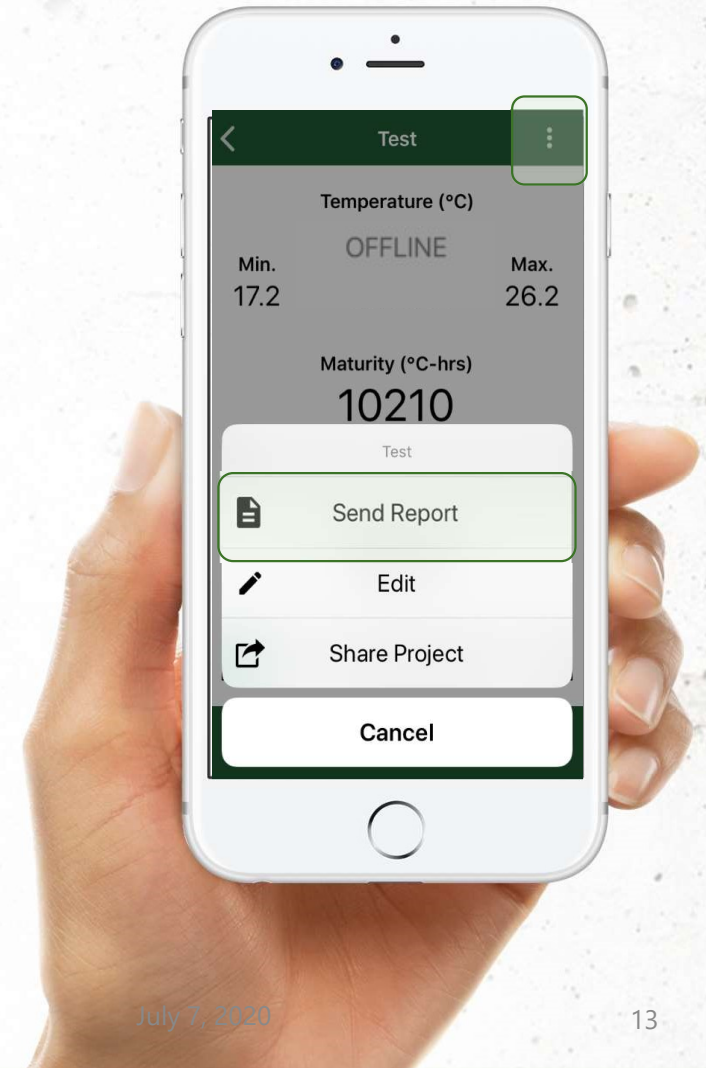
Make sure your app is up to date



Export sensor data

In the section page, click on the sensor

Use the "Send report" option to create PDF and csv and share them through email with your colleagues.

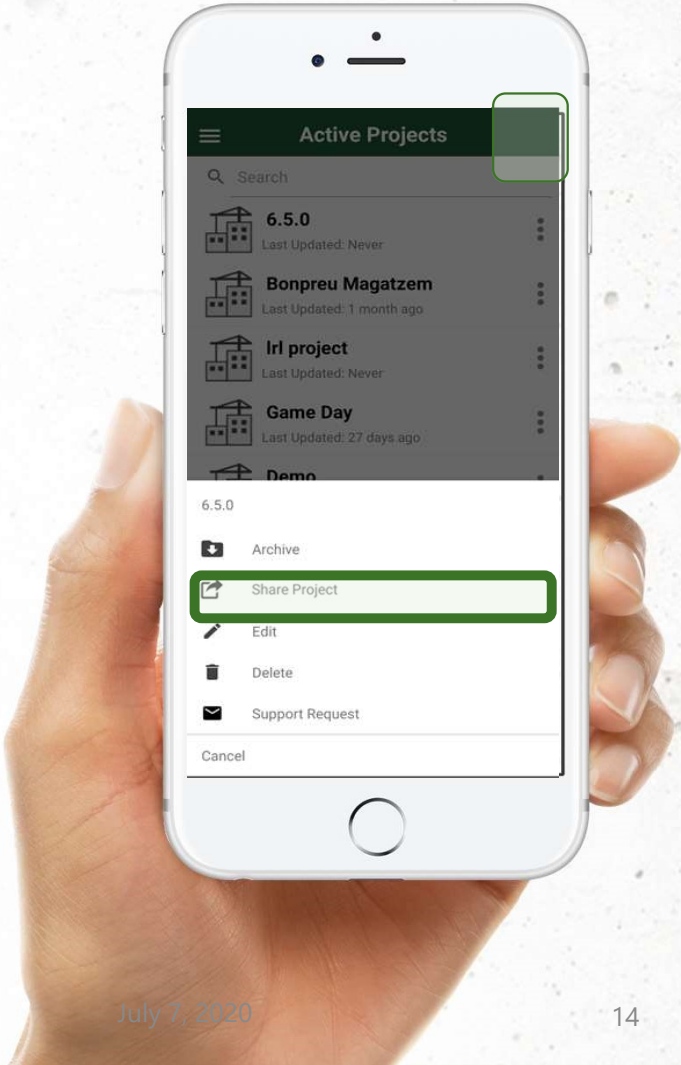


Share Project

On the active project page:

Use the "Share Project" option to share the entire project with colleagues.

Once the project is shared , everyone gets the project updates automatically



Slide 14

IM1

[@Sarah Decarufel] is this a new feature in the app? Because currently to share a project we need to be in the active project page

Icaro Mariani, 2020-07-05

Add Maturity Calibration

From the side menu -> Maturity Calibrations-> + New Maturity calibration

New Maturity CalibrationCancel

Mix ID*
Mix Name 123

Maturity Method
Temperature Time Factor

Datum temperature (°C)
0

Maturity Calculation Method
Enter maturity and strength points

Maturity (°C - hrs)	Strength (MPa)
0.00	0.00

Done

Input general information

New Maturity CalibrationCancel

Maturity Calculation Method
Enter maturity and strength points

Maturity (°C - hrs)	Strength (MPa)
325.62	10
601.12	15
1610.2	20
3721.35	25
13801	30

ADD

Done

Input values

New Maturity CalibrationCancel

325.62	10
601.12	15
1610.2	20
3721.35	25
13801	30

ADD

$S_m = -19.4... + 12.1740 \log(m)$

OPTIONAL SETTINGS

Done

Automated calculation of a and b

A green-tinted photograph of a construction site. In the center, several workers wearing hard hats and safety vests are visible, some appearing to be working with rebar structures. The background is filled with vertical rebar columns and horizontal beams, creating a complex grid-like pattern. The overall scene is industrial and active.

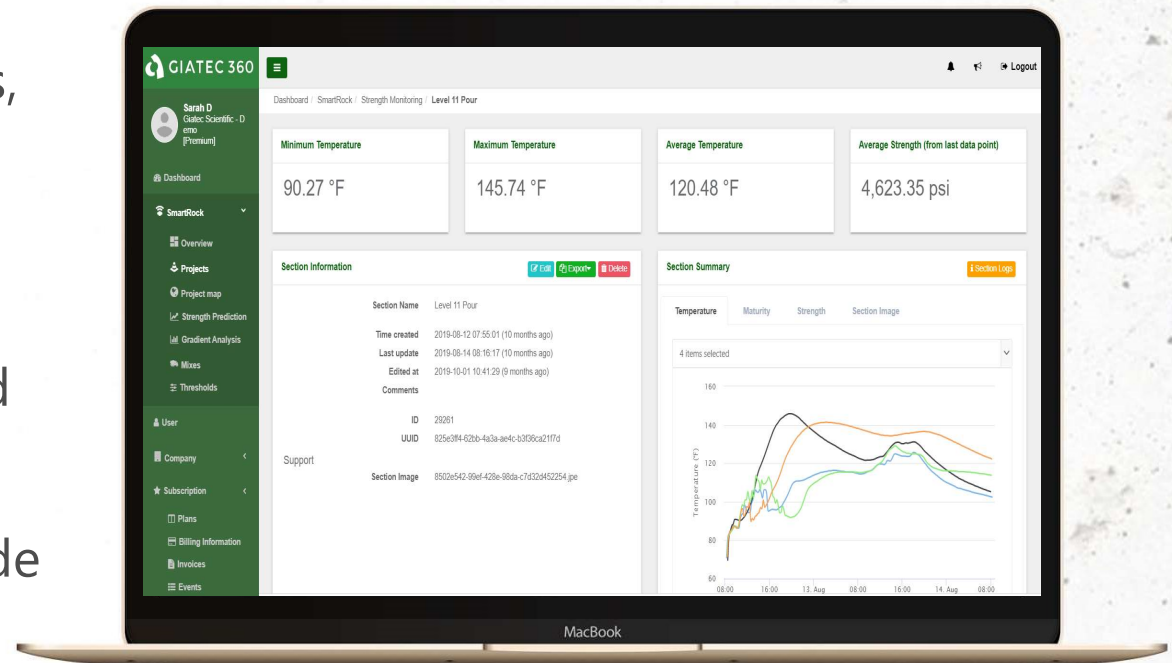
Giatec 360

Communication



What is Giatec 360?

- The Giatec 360 dashboard is the next level in data analytics, reporting, and user management capabilities for SmartRock sensors.
- As a desktop extension of the app, the information is synced on the Giatec 360 dashboard given clients access to numerous features that provide more insights into their projects.



<https://cloud.giatecscientific.com/auth/login>

Giatec 360 Features

	PHONE	ONLINE PLATFORM
No Login	Access to main functionality (project/ section, sensor/ sharing/sensor reporting/threshold/mixes)	<i>Not available</i>
Basic Giatec 360 (Free)	Manage users	Manage users
	Role based access control	Role based access control
	Receive notification	Receive notification
	Remote Monitoring capability	Remote Monitoring capability
Premium Giatec 360 (First 3 months free, then 89\$/month)	<i>Upcoming features...</i>	Access to main functionality (project/ section, sensor/ sharing/reporting, Threshold/ mixes)
		Additional PDF/CSV Reporting option (Section, mix, gradient analysis)
		Gradient Analysis (also include gradient thresholds)
		Maturity calibration – Simplified implementation
		Maturity calibration Artificial intelligence verification
		Concrete strength prediction
		View User Activity Logs and Connected Devices
		Procore Integration (other API integration possible)
		<i>Upcoming features...</i>

Thank You!



**+1 (877) 497-6278 | www.giatec.ca
support@giatec.ca sales@giatec.ca**